

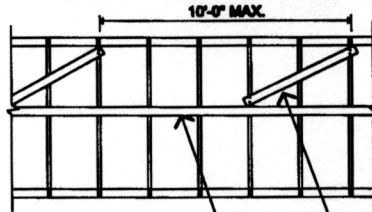
WESTERN WOOD
TRUSS ASSOCIATION
OF BRITISH COLUMBIA

802 WASHINGTON DRIVE PORT MOODY, B.C. V3H 3K8 TEL (604) 936-6398 FAX (604) 936-6650

Technical Guideline:

ANCHORING PERMANENT WEB BRACING

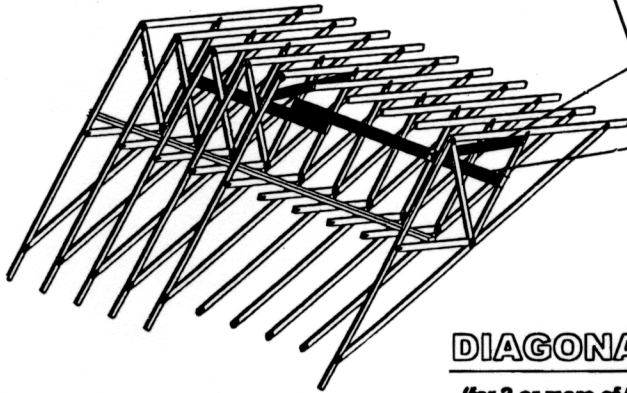
For trusses with
identical web
patterns, lateral brace
may be anchored as
follows



2x4 diagonal brace placed at
approximately 45 degrees to
web from about the midspan
of the web to the top of the
next web, or the web over.

1x4, 2x4 or larger lateral brace(s)
as noted in the truss designs.

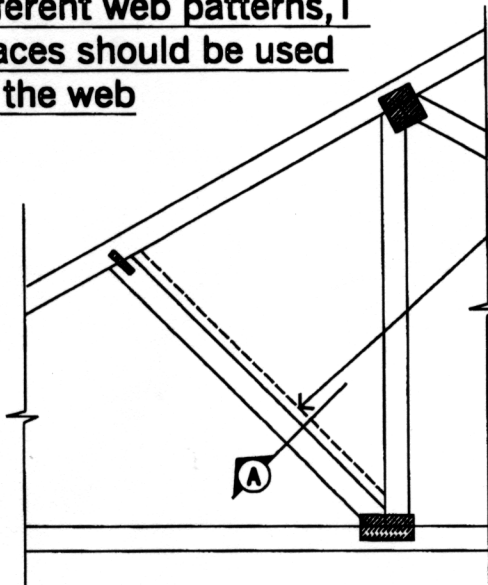
2-3" nails at all web connections



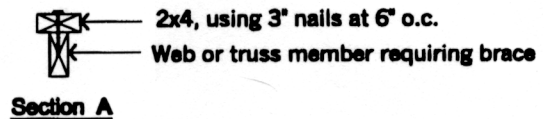
DIAGONAL BRACE ANCHOR

(for 3 or more of trusses with identical web patterns)

For trusses with
different web patterns, T
braces should be used
on the web



2x4 or larger T brace,
length equal to 90% of the web length



T BRACE OPTION

This information is intended to illustrate certain options for transferring web buckling forces to the roof diaphragm in pitched and parallel chord trusses. It is intended to provide typical configurations only. These configurations are deemed to be relatively conservative, however will not cover all cases. Qualified persons must ensure specific applications will resist imposed loads.